

ELECTRICAL BROCHURE

PRODUCT CATALOG

RIDGID



CUT



PUNCH



CRIMP



RE 60
Electrical Tool

3 Functions.
1 Tool. page 3
Multiple benefits.
How it Works page 4-5
Interchangeable Heads • Accessories page 6-7



RE 130-M
Manual Hydraulic Crimp Tool

page 8-9

CABLE CUTTING

Plastic Conduit Pipe Cutters
No 87 ACSR Cable Trimmer
1380 Cable Cutter



page 10

HAND TOOLS • WRENCHES

Aluminum / Heavy-Duty Pipe Wrenches
Chain Wrenches
Multi-Purpose 6-in-1 Screwdriver



page 11

PIPE VISES

Portable TRISTAND® Vises
Work Tables
Hole Saw Kits



page 12

DIAMOND DRILLING

HC-2W Drill/System
RB-3W Drilling System
RB-208/3 Drilling System



page 13

TEST & MEASUREMENT

micro IR-100 Non-Contact Infrared Thermometer
micro LM-100 Laser Distance Meter
micro LM-400 Advanced Laser Distance Meter
micro CL-100 Self-Leveling Cross-Line Laser
micro DM-100 Digital Multimeter
micro CM-100 Digital Clamp Meter



page 14-15

HANDHELD DIAGNOSTICS

micro CA-25 / CA-100 / CA-300 Inspection Camera



page 16

LOCATING

SeekTech® SR-20 / SR-60 Locator
SeekTech ST-330 / ST-510 / ST-305 Line Transmitter
SeekTech Inductive Signal Clamp
SR-24 Line Locator

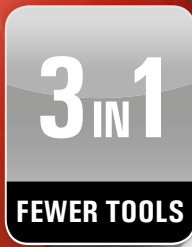
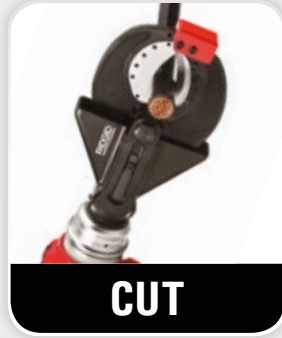


page 17-19



RE 60

**3 FUNCTIONS.
1 TOOL.
MULTIPLE BENEFITS.**



Introducing the **world's most versatile electrical tool**. The RE 60 from RIDGID® features our unique QuickChange System™, allowing you to quickly and easily switch between interchangeable heads for cutting, crimping and punching. Now your most critical tasks can be accomplished with one innovative tool. No more back and forth to the truck, searching for different tools. Whether you're cutting wire, crimping lugs or punching boxes, the RE 60 helps you maximize your productivity and efficiency on the jobsite. **Experience it at RIDGID.EU/QCS.**

 **SCAN, SEE & SAVE**

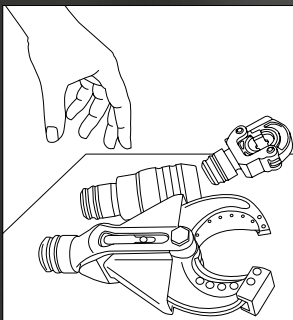
We
Build
Reputations™

RIDGID

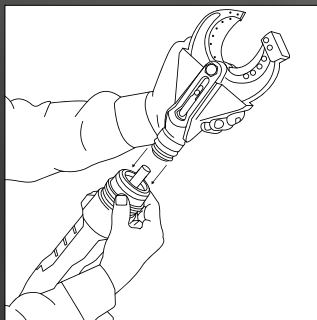


HOW IT WORKS

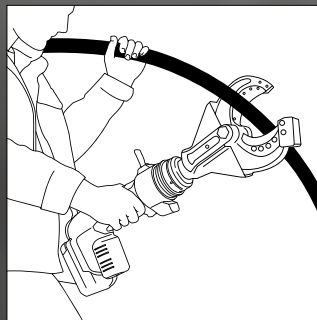
THE RIDGID QUICKCHANGE SYSTEM™



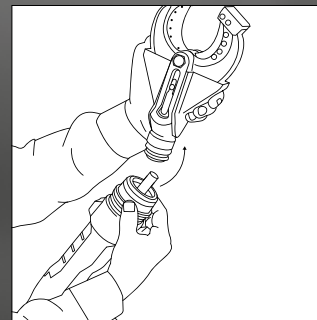
1. Select the appropriate interchangeable head for the job.



2. Pull back the collar. Insert the head until you hear a click confirming the connection.



3. Complete the job – cut, crimp or punch.



4. Remove the head by pulling the collar toward the base of the tool.



RE 60 ELECTRICAL TOOL

KEY PERFORMANCE FEATURES

AUTOMATIC RAM RETRACTION

During cutting and crimping, the ram will automatically retract once the cycle is completed. Punching applications require use of the release trigger.

ONBOARD DIAGNOSTICS

Built-in sensors and LED indicators ensure tool performance, allow the tool to operate in extreme temperatures (-10° to 50°C), monitor battery life and indicate when the tool requires service.

SPECIFICATIONS

- 60 kN hydraulic force output to cut cable up to 50 mm Diameter, crimp Cu/Al lugs up to 300 mm² and punch round holes up to 63,5 mm;
- Automatic ram retraction when cutting and crimping;
- Rubber overmolded grips for superior comfort and control;
- 360° head rotation;
- Bright white LED workspace illumination light;
- On/Off button for disabling tool when changing heads or transporting;
- Nylon straps for greater ease-of-use;
- Approximate Cycle Time: 5 seconds;
- Longest service interval in the industry: 32.000 cycles;
- Weight: 3.2 kg w/battery;
- Kit Includes: RE 60 Electrical Tool, 2 × 18 V Advanced Lithium 2.0 Ah batteries, 230 V Charger and blow-molded case; multiple head configurations available.

ORDERING INFO

Catalog N°	Description	Weight kg
43633	RE 60 Electrical Tool Kit w/SC-60B Scissor Cutter, LR-60B Latching Round Crimp Head and PH-60B Punch Head	13,5
43628	RE 60 Electrical Tool Kit w/SC-60B Scissor Cutter Head and LR-60B Latching Round Crimp Head	11,7
50108	RE 60 Electrical Tool Kit w/ LR-60B Latching Round Crimp Head and PH-60B Punch Head	11,2
43613	RE 60 Electrical Tool Kit w/LR-60B Latching Round Crimp Head	10
43618	RE 60 Electrical Tool Kit w/SC-60B Scissor Cutter Head	10
43623	RE 60 Electrical Tool Kit w/PH-60B Punch Head	9,5
47773	RE 60 Electrical Tool Case Only	4,3
47753	LR-60B Latching Round Crimp Head Only	1,5
47763	PH-60B Knockout Punch Head Only	1,6
47778	SC-60B Scissor Cutter Head w/Blade for Cu/Alu Cable	2,2
47088	Interchangeable Blades for Copper/Aluminum Cable	0,1
47093	Interchangeable Blades for Copper Fine Stranded Wire	0,1
43323	18 V Advanced Lithium 2.0 Ah Battery	0,5
43328	18 V Advanced Lithium 4.0 Ah Battery	0,7
43333	230 V Advanced Lithium Battery Charger	0,8

The world's most versatile tool features a lightweight inline design (only 3,2 kg with battery) for easy, one-handed use and access to the most confined spaces.

We
Build
Reputations™

RIDGID

INTERCHANGEABLE HEADS

SCISSOR CUTTER HEAD

Made from high-strength steel, this Cutter Head uses interchangeable blades capable of cutting copper & aluminium building wire and fine stranded copper wire. The SC-60B comes standard with a blade set for copper and aluminium building wire.

NAME:	SC-60B
CAT. N°:	47778
WEIGHT:	2,2 kg

CAPACITY & MATERIAL:

Copper & Aluminium wire (default)	Fine Stranded Copper Building Wire	ACSR Cable
Up to 50 mm diameter	Up to 50 mm diameter	Up to 22 mm diameter
Cat. N° Replaceable Blade: 47088	Cat. N° Replaceable Blade: 47093	Cat. N° Replaceable Blade: 47098



HOLE PUNCHING HEAD

Designed for use with RIGID® and other commercially available punch dies, the Punch Head is ideal for punching round, square and rectangular holes in ST37 steel plates up to 3 mm wall-thickness.

NAME:	PH-60B
CAT. N°:	47763
WEIGHT:	1,6 kg
CAPACITY:	63,5 mm (round holes) 92 × 92 mm (square holes) 46 × 92 mm (rectangular holes)



Punch dies and accessories are sold separately.

LATCHING ROUND CRIMP HEAD

Crimp Head for holding round shape crimping dies within the capacity range. Features a slim and ergonomic latching system, allowing for work in tighter spaces.

NAME:	LR-60B
CAT. N°:	47753
WEIGHT:	1,5 kg
CAPACITY:	6 mm ² – 300 mm ²



Crimping dies are sold separately.

ACCESSORIES

INTERCHANGEABLE BLADE SETS FOR SC-60B CUTTER HEAD



Interchangeable Blade Sets

Catalog N°	Description
47088	Interchangeable Blade Set for Copper/Aluminum Cable
47093	Interchangeable Blade Set for Copper Fine Stranded Wire
47098	Interchangeable Blade Set for ACSR cable (max. 22 mm dia.)

HOLE PUNCHING DIES & ACCESSORIES FOR PH-60B PUNCH HEAD

Standalone Hole Punch & Die

Catalog N°	Hole Punches for Punching Round Holes through max. 3 mm ST37 steel plates
44058	Hole Punch ST16 (16,2 mm)
44063	Hole Punch ST20/PG13 (20,4 mm)
44068	Hole Punch ST25 (25,4 mm)
44073	Hole Punch ST32 (32,5 mm)
44078	Hole Punch ST40 (40,5 mm)
44083	Hole Punch ST50 (50,5 mm)
44088	Hole Punch ST63 (63,5 mm)
44093	Hole Punch PG16 (22,5 mm)

- Hole Punches up to 25,4 mm require the use of 9,5 mm draw bolt (44098) and 1x Spacer No. 4 included in the Set of Spacers (44108)
- Hole Punches larger than 25,4 mm require the use of 19 mm draw bolt (44103) and Spacer No. 1 and 2 included in the Set of Spacers (44108).

Hole Punch Set

Catalog N°	Hole Punch-Set featuring ST16/20/25/32/40 Hole Punches and Dies, 3 Spacers, 2 Draw Bolts and 1 Pre-drill
44113	Hole Punch-set

Hole Punching Accessoires

Catalog N°	Accessories
44098	9,5 mm Draw Bolt required for ST16/20/PG13/ST25 punches
44103	19 mm Draw Bolt required for ST32/40/50/63 punches
44108	Set of Spacers required for all Hole Punch sizes

CRIMPING DIES FOR LR-60B CRIMP HEAD

Catalog N°	Cross Section mm ²
44173	6
44178	10
44183	16
44188	25
44193	35
44198	50
44203	70
44208	95
44213	120
44218	150
44223	185
44228	240
44233	300

Round Crimping Dies for crimping DIN type copper lugs and connectors

Catalog N°	Cross Section mm ²
47933	6
47938	10
47943	16
47948	25
47953	35
47958	50
47963	70
47968	95
47973	120
47978	150
47983	185
47988	240
47993	300

Round Crimping Dies for crimping standard type copper tubular lugs and connectors

Catalog N°	Cross Section mm ²
44243	16-25
44248	35
44253	50
44258	70
44263	95-120
44268	150
44273	185
44278	240

Round Crimping Dies for crimping DIN type aluminium lugs and connectors

RE 130-M

MANUAL HYDRAULIC CRIMP TOOL

Introducing the world's lightest and easiest-to-use 130 kN Manual Hydraulic Crimp Tool with C-Frame



**WORLD'S LIGHTEST
130 KN TOOL***
Very easy to use & carry



LOW HANDLE FORCE
Less hand strain & operator fatigue



EXCLUSIVE HEAD STAND
Easy one-man operation



**RIDGID®
RAPIDADVANCE SYSTEM™**
Quickly engage the lug
in just 2 pumps!



DIE SLOT DECALS
Quick die identification & retrieval

* Among C-Frame Style Manual Hydraulic Crimp Tools with 400mm² CU capacity.

SPECIFICATIONS

- 130 kN hydraulic force output and 42 mm stroke to easily accommodate large size lugs and connectors (up to 400 mm² Cu);
- RIDGID® RapidAdvance System™ quickly engages the lug in just 2 pumps to minimize unnecessary pumping;
- Built-in Pressure Relief-valve which signals when the maximum force is reached and crimping is complete;
- Manual ram retraction when the crimp is complete or in case of need;
- 330° head rotation for better access in tight spaces;
- Rubber grips for superior comfort and control;
- Length: 557 mm; Weight: 5.3 kg;
- Capacity: Max. 400 mm² Cu; Max. 240 mm² Al;

*48378 kit contains: RE 130-M Tool; Head Stand; RIDGID Die Slots Decals; Blow Molded Case; Operator's manual

FEATURES

- Lightest 130 kN tool on the market*, for more portability and ease of use;
- Unique RIDGID® RapidAdvance System™ that engages quickly and easily crimps lugs;
- Low handle force reduces hand strain and operator fatigue;
- Industry exclusive Head Stand allows for one-man operation. Easily position cable / lug between the dies and complete the crimp;
- 15 slots for crimping dies in the carrying case with special slot decals for quick die identification and retrieval.

* Among C-Frame Style Manual Hydraulic Crimp Tools with 400 mm² CU capacity.



Catalog No.	Model No.	Description	Weight		Std. Pack
			lb.	kg	
48378	RE 130-M	Crimp Tool	25,3	11,5	1
48968	RE 130-M	Case	12,7	5,80	1
48988	RE 130-M	Head Stand	0,6	0,30	1

Plastic Conduit Pipe Cutters

For easy cutting of plastic conduit pipe up to 63 mm diameter. Intended plastic materials: PVC, CPVC, PP, PEX, PE, Rubber hose.

SINGLE STROKE CUTTERS:

- Spring loaded handles for faster positioning. Single stroke, easy cut.
- PC-1250 features a reversible blade providing two times blade life.
- PC-1375 ML: durable aluminium construction for heavy-duty use.

Catalog No.	Model No.	Description	Capacity (O.D.)	Weight		Std. Pack
			mm	lb.	kg	
23488	PC-1250	Single Stroke Tubing Cutter	3 - 42	½	0,22	6
26803	PCB-1250	PC-1250 Replacement Blade	—	⅛	0,05	1
23493	PC-1375 ML	Single Stroke Tubing Cutter	3 - 35	¾	0,34	6
25588	PCB-1375	PC-1375 Replacement Blade	—	⅛	0,05	1



RATCHET CUTTERS WITH ERGONOMIC GRIPS:

- Ratchet action for quick and easy cutting of plastic conduit pipe.
- Ergonomic grips on bottom handle are spaced at ½" increments to act as a quick pipe measuring scale.
- X-CEL® pin for quick (no tool needed) change of blade.

Catalog No.	Model No.	Description	Capacity (O.D.)	Weight		Std. Pack
			mm	lb.	kg	
23498	RC-1625	Ratchet Action Plastic Pipe & Tubing Cutter	3 - 42	1⅜	0,52	1
27858	RCB-1625	RC-1625 Replacement Blade	—	⅛	0,03	1
30088	RC-2375	Ratchet Action Pipe & Tubing Cutter	12 - 63	1⅞	0,90	1
30093	RCB-2375	RC-2375 Replacement Blade	—	¼	0,10	1

Nº 87 ACSR Cable Trimmer

FOR FAST, ACCURATE CABLE SPLICE PREPARATION

- Trims 85 sizes of ACSR cable from 8 AWG to 1,780,000 circular mils (C.M.).
- Bushings for 9 popular cable sizes from 1/0 AWG through 1,780,000 C.M. available from stock.
- The operation of the tool is similar to that of a conventional tubing cutter.
- The bushing holder, cutter and handy carrying case are sold as one unit.
- Case contains storage sockets for 11 bushings. Twelfth bushing is stored in holder.

Catalog No.	Model No.	Description	Weight		Std. Pack
			lb.	kg	
54135	87	ACSR Cable Trimmer, includes Bushing Holder, Cutter, and Carrying Case	9½	4,30	1
54270	E-4695	Cutter Wheel	1	0,02	1



1380 Cable Cutter

The Model 1380 Cable Cutter is designed to shear-cut insulated aluminum and copper cable through max. 35 mm diameter*. Drop-forged, heat-treated, alloy steel jaws shear cable with minimum distortion of internal wires. Fitted with fiberglass-insulated handles and rubber grips.

*Not intended for cutting steel or ACSR cable.

Catalog No.	Model No.	Description	Weight		Std. Pack
			lb.	kg	
83350	1380	Al/Cu Cable Cutter up to 35 mm diameter	4,5	2,0	1



Aluminum Pipe Wrenches

- Nearly 40% lighter than comparable cast-iron wrenches.
- Jaws and all other parts identical to RIDGID® heavy-duty wrenches.
- Professional strength in lightweight aluminum.
- Offers the same durability and ease-of-use found in all RIDGID heavy-duty wrenches.

Catalog No.	Model No.	Nom. Size ⁽¹⁾		Pipe Capacity ⁽²⁾		Weight		Std. Pack
		in.	mm	in.	mm	lb.	kg	
31090	810	10	250	1½	40	1	0,4	6
47057	812	12	300	2	50	2½	1,1	6
31095	814	14	350	2	50	2½	1,1	6
31100	818	18	450	2½	65	3¾	1,7	6
31105	824	24	600	3	80	6	2,7	6
31110	836	36	900	5	125	11	5,0	1
31115	848	48	1200	6	150	18½	8,4	1



Heavy-Duty Pipe Wrenches

- Sturdy, cast-iron housing and I-beam handle with full floating forged hook jaw, featuring self-cleaning threads with replaceable hook and heel jaws.

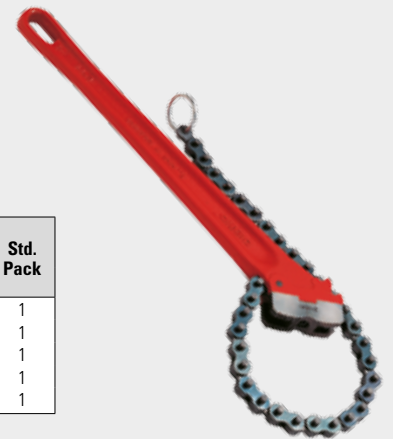
Catalog No.	Model No.	Nom. Size ⁽¹⁾		Pipe Capacity ⁽²⁾		Weight		Std. Pack
		in.	mm	in.	mm	lb.	kg	
31000	6	6	150	¾	20	½	0,2	6
31005	8	8	200	1	25	¾	0,3	6
31010	10	10	250	1½	40	1¾	0,8	6
31015	12	12	300	2	50	2¾	1,2	6
31020	14	14	350	2	50	3½	1,6	6
31025	18	18	450	2½	65	5¾	2,6	6
31030	24	24	600	3	80	9¾	4,4	3
31035	36	36	900	5	125	19	8,7	1
31040	48	48	1200	6	150	34¼	15,6	1
31045	60	60	1500	8	200	51¼	23,3	1



Chain Wrenches

- A double jaw gives fast, ratchet-like action in either direction.
- The heavy-duty model has replaceable alloy steel jaws.
- The light-duty model has a one-piece forged alloy steel handle and jaw. Ideal for use in close quarters.

Catalog No.	Model No.	Description	Rated Pipe Capacity ⁽³⁾		Actual O.D. Capacity ⁽⁴⁾		Chain Length		Weight		Std. Pack
			in.	mm	in.	mm	in.	mm	lb.	kg	
31310	C-12	Light-Duty Chain	2	50	4	100	15¾	390	1¾	0,8	1
31315	C-14	Heavy-Duty Chain	2	50	5	125	18½	460	2¾	1,2	1
31320	C-18	Heavy-Duty Chain	2½	60	5	125	20¼	500	6	2,7	1
31325	C-24	Heavy-Duty Chain	3	75	5	125	20¼	500	8¼	3,7	1
31330	C-36	Heavy-Duty Chain	4½	110	7½	185	29	725	15¾	7,1	1



Multi-Purpose 6-in-1 Screwdriver

- Includes #1 and #2 Phillips® tip, ⅜" and ¼" flat tip, ⅝" and ¼" nut drivers in the shaft.
- Contoured cushioned grip for increased grip and torque.
- Ball/spring retention shaft with positive snap-fit locking handle.

Cat. No.	Model No.	Description	Body		Weight		Std. Pack
			in.	mm	lb.	kg	
16573	1974	6-in-1 Screwdriver	8	203	0,24	0,11	12



(1) Nominal size = length of handle.

(2) Pipe capacity = maximum nominal diameter of steel pipe.

(3) Rated pipe capacity = nominal diameter that can be correctly tightened.

(4) Actual O.D. capacity = actual O.D. that can be gripped.

Portable TRISTAND® Vises

- Models 460 and 40-A include integral legs and tray folds in for easy carrying and setup. Large vise base overhangs front legs for clear tool swing.
- Models 460 and 40-A include slots for hanging tools, pipe rest, three-pipe benders and ceiling brace screw.
- Model 460-6 features a larger work surface, 6" (150 mm) diameter, rear support and receding ceiling brace screw.
- Model 460-12 features an integrated ground lug to provide a conductive surface to connect the weld ground.
- Model 425 features "quick grab" self-locking latch and carrying handle for ease of transport.

Catalog No.	Model No.	Description	Pipe Capacity		Weight		Std. Pack
			in.	mm	lb.	kg	
40130	40-A	Portable TRISTAND Yoke Vise	½ - 2½	6 - 60	48½	22,0	1
16703	425	Portable TRISTAND Chain Vise	½ - 2½	6 - 60	32	14,5	1
36273	460-6	Portable TRISTAND Chain Vise*	½ - 6	6 - 150	42¾	19,4	1
36278	460-12	Portable TRISTAND Chain Vise	½ - 12	6 - 300	60¾	27,6	1

* For model 460-6, jaw for plastic pipe, Catalog No. 41280 available; order separately.



Work Tables

- Heavy duty construction.
- Tough wood working surface which has been specially treated to resist water and dust.
- The legs are of tubular construction designed to carry heavy loads.
- The benches are simple to erect and dismantle and easy to transport.
- Available in 3 sizes.

Cat. No.	Model No.	Size cm	Table Top Thickness mm	Height cm	Weight		Std. Pack
					lb.	kg	
16601	1100	83 × 50	30	80,0	46,3	21,0	1
16361	1300	108 × 62	22	83,6	75,0	34,0	1
15841	1400	107 × 75	30	84,0	88,2	40,0	1



Hole Saw Kits

Plumber's, electrician's and combination kits each contain a selection of RIDGID hole saws and hole saw arbors for cutting through wood, steel, cast iron, brass and aluminum.



Catalog No.	Model No.	Description	¾"	¾"	1¼"	1¼"	1½"	1¾"	2"	2¼"	2½"	2¾"	Arbors			Weight		
			19 mm	22 mm	29 mm	35 mm	38 mm	44 mm	51 mm	57 mm	64 mm	67 mm	R0	R1	R2	lb.	kg	
81490	1248	Plumber Kit		•	•			•	•		•	•		•	•	•	3½	1,5
81495	1249	Electrician Kit		•	•	•			•	•				•	•	•	3½	1,5
81500	1250	General Purpose Kit	•	•	•	•	•	•	•	•	•	•		•	•	•	6½	2,8

HC-2W Drill/System

- Versatile: Suitable for dry or wet drilling.
- Freehand drilling in brickwork up to 5¼" (132 mm), freehand wet drilling in concrete up to 3¼" (82 mm); wet drilling in reinforced concrete up to 5¼" (132 mm) when using the stand (Cat. No. 59016).
- Regulation of waterflow located on the handle, for optimal control during handheld operation.
- Overload indicator (LED) gives visual feedback while drilling.
- External water seals for easy replacement.
- Supplied in metal carrying case.

Catalog No.	Model No.	Description	Weight		Std. Pack
			lb.	kg	
26721	HC-2W	HC-2W, Handheld Dry and Wet Drill, 230 V, PRCD	13¼	6,0	1
26741	HC-2W-C	230 V Complete with Dust Extractor & Wrenches	14	6,4	1
59016	–	HC-2 Stand + Anchoring Set	15½	7,0	1
26381	–	HC-2W, 230 V + Stand + Anchoring Set	28½	13,0	1



RB-3W Drilling System

- Suitable for dry or wet drilling, freehand drilling or drilling from the stand.
- Freehand dry drilling in brickwork up to 162 mm; freehand wet drilling in concrete up to 82 mm, wet drilling up to 162 mm with the stand.
- Regulation of waterflow located on the handle, for optimal control during handheld wet drilling operation.
- Tool-free quick-acting fixation of machine to the stand.

Catalog No.	Model No.	Description	Weight		Std. Pack
			lb.	kg	
34501	RB-3W System	RB-3W Motor, 230 V + Stand + Anchoring Set	44	19,9	1
34601	RB-3W System	RB-3W Motor, 115 V + Stand + Anchoring Set	44	19,9	1



RB-208/3 Drilling System

- Quick-acting connection of machine to the stand.
- Overload indicator (LED) gives visual feedback while drilling.
- External water seal for easy replacement.
- Replaceable brushes.
- Motor cooling system for heavy duty application.
- Gearbox with integrated oil pump for continuous lubrication.

Catalog No.	Model No.	Description	Weight		Std. Pack
			lb.	kg	
33411	RB-208/3	RB-208/3, 230 V Motor + Stand + Anchoring Set + Wrenches	61¾	28,0	1
33421	RB-208/3-C	RB-208/3, 230 V Motor + Stand + Anchoring Set + Vacuum Pump + Air Hose + Wrenches	68¾	31,0	1
33431	RB-208/3	RB-208/3, 115 V Motor + Stand + Anchoring Set + Wrenches	61¾	28,0	1



micro IR-100 Non-Contact Infrared Thermometer

- Easy, quick and very accurate temperature measurements (-50°C up to 800°C) from a safe distance at the push of a button.
- Ultra Sharp Dual Class II Lasers easily illuminate the surface area being measured.
- Ergonomic Pistol Style Grip with rugged over molding allows you to keep a solid grip in the harshest of industrial environments.
- 20:1 Distance To Spot Ratio allows you to take more accurate measurements from long distances.
- Visual / audible alarms, backlit LCD display and tripod mount capable.

Catalog No.	Model No.	Description	Weight		Std. Pack
			lb.	kg	
36153	micro IR-100	Non-Contact Infrared Thermometer	0,5	0,2	1



Includes soft carrying case and 1x 9 V battery

micro LM-100 Laser Distance Meter

- Ultra Sharp Class II Lasers clearly highlight the point being measured.
- Exceptional Distance Range allows accurate measurements up to 50 m.
- Adjustable Units enable you to quickly read in feet, inches or meters on the fly.
- Bright Backlit Display for use in poorly lit areas.
- Quick and Accurate calculations on the spot.
- Measurement calculations: Addition, Subtraction, Area, Volume and Indirect measurements.

Catalog No.	Model No.	Description	Weight		Std. Pack
			lb.	kg	
36158	micro LM-100	Laser Distance Meter	0,5	0,2	1



Includes soft carrying case and 2x AAA batteries

micro LM-400 Advanced Laser Distance Meter

- Clearly view measurements on the large, backlit, 4-line display.
- Inclination angle measurement allows indirect measurements for hard to reach areas.
- Adjust units instantly to inches, feet, or meters.
- Bluetooth® connection to smartphones and tablets to view, store, and share data.
- Android® and iOS® Apps to overlay measurements onto a photo or sketch.
- Measuring Range & Accuracy: 70 m / ±1.5 mm.

Catalog No.	Description	Weight	
		lb.	kg
36813	micro LM-400 Advanced Laser Distance Meter	0,44	0,22



Includes soft carrying case and 2x AA batteries

micro CL-100 Self-Leveling Cross-Line Laser

- Single knob operation, very easy to use.
- Leveling and alignment jobs done at the blink of an eye.
- Instant projection of super-bright vertical and horizontal lines.
- Laser type: Class 2, 630 - 670 nm.
- Millimeter accuracy: 2 mm / 10 m.
- Extended interior range of 30 meters.
- Self-leveling range of $\pm 6^\circ$.
- Integrated 360° swivel base.

Cat. No.	Model No.	Description	Projection	Diode nm	Range m	Weight		Std. Pack
						lb.	kg	
38758	micro CL-100	Self-Leveling Cross-Line Laser kit	Horizontal & Vertical	630-670	30	1,1	0,50	1



Includes rugged plastic carrying case, 3x AAA batteries, Laser Enhancing glasses and Elevating Tripod for free

micro DM-100 Digital Multimeter AutoRanging & True RMS

- Features a double molded drop-proof and water-resistant (1 m) IP67 housing.
- 11 different electrical functions ranging from AC/DC Voltage & Current (1000 V/10 A) to Temperature measurements.
- Rated for industrial use, CAT III - 1000 V & IV - 600 V.
- Extra Large Backlit LCD display for easy and clear readings.
- Overload Protection & 2x Fuses (0.5 A & 10 A - 1000 V).
- Functions: Voltage AC/DC, Current AC/DC, Resistance, Capacitance, Frequency, Duty Cycle, Diode Check, Continuity Test, Temperature.

Catalog No.	Description	Weight	
		lb.	kg
37423	micro DM-100 Digital Multimeter	0,84	0.38

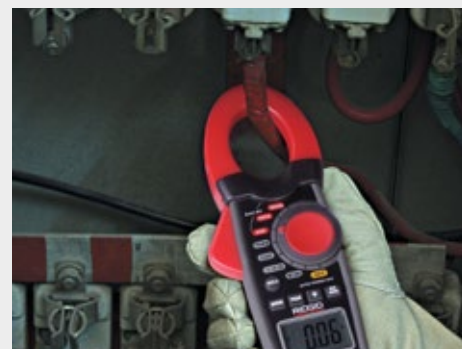


Includes soft carrying case, double molded test leads, Type K temperature probe and a 9 V battery

micro CM-100 Digital Clamp Meter AutoRanging & True RMS

- Large Capacity, clamp around cables up to 30 mm diameter.
- Large Measuring range, up to 1000 A.
- AC/DC Current Range: 40 A / 400 A / 1000 A.
- Clear & Accurate readings on the large backlit LCD with Bargraph Display.
- 10 functions in one: Voltage AC/DC, Current AC/DC, Resistance Capacitance, Frequency, Diode & Continuity Test, Temperature
- Overload Protection: CAT III - 600 V.

Catalog No.	Description	Weight	
		lb.	kg
37428	micro CM-100 Digital Clamp Meter	0,66	0.3



Includes soft carrying case, test leads, Type K temperature probe and a 9 V battery

micro CA-25 Inspection Camera

The micro CA-25 features a 17 mm aluminium imager head with 4 ultra-bright LED lights, bringing superior image quality to its 2.4" Colour LCD Screen. It also features Video Out for transferring live images to external devices and 180° Digital Image Rotation for getting upright images.

- Display: 2.4" Colour LCD (Image Rotation: 2x 180°).
- Cable Reach: 90 cm fixed.

Catalog No.	Description	Weight	
		lb.	kg
40043	micro CA-25 Inspection Camera	1,5	0,68



Includes plastic carrying case, 4x AA batteries, RCA Cable, Accessories (Hook, Magnet and Mirror)

micro CA-100 Inspection Camera

The new RIDGID® micro CA-100 Inspection Camera allows you to perform more detailed visual inspections in even harder-to-reach areas. Its comfortable pistol-grip design, one-hand controls, and large screen make it easy to see into the tightest spots. The micro CA-100 comes standard with a rugged 17 mm anodized aluminum camera head with four super bright LEDs to see into the darkest areas.

- Display: 3.5" Colour LCD (Image Rotation: 4x 90°).
- Cable Reach: 90 cm expandable to 9 m w/optional extensions.

Catalog No.	Description	Weight	
		lb.	kg
36738	micro CA-100 Inspection Camera	1.7	0,76
37103	17 mm Replacement Imager	0.7	0,3
37098	6 mm Imager with 1 m Cable	0.24	0,1
37093	6 mm Imager with 4 m Cable	0.9	0,4
37108	Universal 3' (90 cm) Cable Extension	0.75	0,3
37113	Universal 6' (180 cm) Cable Extension	1.5	0,68



Includes plastic carrying case, 4x AA batteries, RCA Cable, Accessories (Hook, Magnet and Mirror)

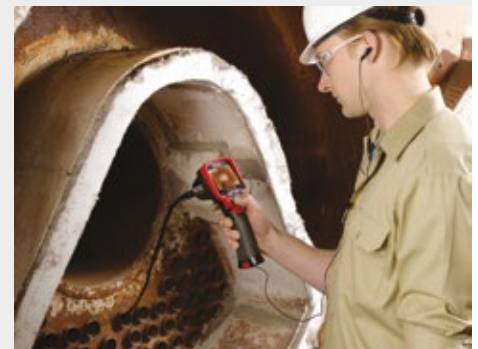
micro CA-300 Inspection Camera

Documentation is made easy with the RIDGID® micro CA-300 Inspection Camera. Easily record still images and videos of problems in hard-to-reach areas and save these on the internal memory (235 mb) or on the included 4 GB SD-card. Comfortable pistol-grip design, large screen and rugged anodized aluminum camera head with four bright LEDs make it easy to detect and diagnose the unreachable.

Get the perfect view with enhanced features like image rotation and digital zoom. Besides the replaceable 3.7 V Li-Ion battery, the micro CA-300 can also be powered with the included AC Adapter which is ideal for time consuming (drain) inspection jobs or when you simply run out of battery.

- Display: 3.5" Colour LCD (Image Rotation: 4x 90°).
- Cable Reach: 90 cm expandable to 9 m w/optional extensions.
- Image / Video Recording (JPEG/ MP4).

Catalog No.	Description	Weight	
		lb.	kg
40613	micro CA-300 Inspection Camera	5,5	2,5
37103	17 mm Replacement Imager	0,7	0,3
37098	6 mm Imager with 1 m Cable	0,24	0,1
37093	6 mm Imager with 4 m Cable	0,9	0,4
37108	Universal 3' (90 cm) Cable Extension	0,75	0,3
37113	Universal 6' (180 cm) Cable Extension	1,5	0,68
37083	micro CA-300 3.7 Li-Ion battery	0,24	0,1
37088	micro CA-300 230 V Charger	0,24	0,1
37123	micro CA-300 hook/magnet/mirror	0,24	0,1
40453	micro CA-300 Power Adapter	0,24	0,1



Includes: 3.7 V Li-Ion battery, 230 V Charger, 4 GB SD-card, AC Adapter, Hook/Magnet/Mirror-pack, 90 cm RCA cable, USB cable and Headset (incl. microphone)

SeekTech® SR-20 Locator

For a lightweight yet rugged receiver that provides all the information needed for faster, more accurate locates.

Easy to Use

- Target line and guidance arrows quickly identify distortion.
- Proximity signal and signal strength help work through difficult locates.
- Can trace any frequency from 10 Hz to 35.000 Hz.

SR-20 Locator Specifications

Active Line Trace Frequencies*128 Hz, 1 kHz, 8 kHz, 33 kHz.
 Passive Power Trace50 Hz, 60 Hz, <4 kHz Broadband.
 Passive Radio Trace4 kHz - 15 kHz, 15 kHz - 36 kHz.
 Sonde Frequencies..... 16 Hz, 512 Hz, 640 Hz, 850 Hz,
 8 kHz, 16 kHz, 33 kHz.
 Power Source4 C-Cell Batteries.
 Battery Life.....Approximately 16 Hours.
 Weight.....3.5 lbs. (1,6 kg).
 Meets FCC Class A and EN 55022 Class A requirements.

Catalog No.	Description	Weight	
		lb.	kg
21943	SeekTech SR-20 Line Locator	3,5	1,6
22173	SR-20 Case	5	2,2

* 30 user definable frequencies can be set from 10 Hz to 35.000 Hz.



SeekTech® SR-60 Locator

For the fastest, easiest, most versatile receiver available.

Versatility

- Can trace any frequency from 10 Hz to 93.000 Hz.
- Can trace energized lines and sondes (active beacons) simultaneously.
- Has all the ease of use and accuracy of the SR-20 locator but with ALL locatable frequencies.

Choose the SR-60 locator for fast confident locates even under tough locate conditions (poor conductors, poor soil conditions, poor grounding, etc.).

SR-60 Locator Specifications

Active Line Trace Frequencies*128 Hz, 1 kHz, 8 kHz, 33 kHz,
 51 kHz, 93 kHz.
 Passive Power Trace50 Hz, 60 Hz, <4 kHz Broadband.
 Passive Radio Trace4 kHz - 15 kHz, 15 kHz - 36 kHz.
 Sonde Frequencies*16 Hz, 512 Hz, 640 Hz, 850 Hz,
 8 kHz, 16 kHz, 33 kHz.
 Power Source4 C-Cell Batteries.
 Battery Life.....Approximately 16 Hours.
 Weight.....5.1 lbs. (2,3 kg).
 Meets FCC Class A and EN 55022 Class A requirements.

Catalog No.	Description	Weight	
		lb.	kg
30123	SeekTech SR-60 Line Locator	5,1	2,3
29798	SR-60 Case	5	2,2

* 30 user definable frequencies can be set from 10 Hz to 93.000 Hz.



SeekTech ST-33Q+ Line Transmitter with Bluetooth®

- The ideal transmitter for inducing current onto a target line.
- Increase efficiency and trace further by inducing over eight times more current onto a target line.
- The most versatile transmitter available with any direct connect frequency between 10 Hz and 93 kHz.
- Audio feedback confirms a good circuit before beginning a trace.

Catalog No.	Description	Weight	
		lb.	kg
49343	SeekTech ST-33Q+ Transmitter with Bluetooth® (10 Watts)	11,1	5,0



SeekTech ST-510 Line Transmitter

- Ten Watts of fully variable power output.
- LCD display provides instant visual feedback on line resistance and current flow.
- Two 25' (7,62 m) lead wires with heavy duty clips.
- Compatible with competitor's equipment.
- Audio feedback confirms a good circuit before beginning a trace.

Catalog No.	Description	Weight	
		lb.	kg
21953	SeekTech ST-510 Transmitter (10 Watts)	9	4,1



SeekTech ST-305 Line Transmitter

- Lightweight and compact transmitter that delivers up to 5 Watts of power.
- Can transmit two frequencies simultaneously.
- Audio feedback confirms a good circuit before beginning a trace.

Catalog No.	Description	Weight	
		lb.	kg
21948	SeekTech ST-305 Transmitter (5 Watts)	2,5	1,9



SeekTech Inductive Signal Clamp

- Allows users to apply a signal to a cable or pipe when direct connection is not possible.
- Compatible with all RIDGID® transmitters.

Catalog No.	Description	Weight	
		lb.	kg
20973	SeekTech 4" (100 mm) Inductive Signal Clamp	2	0,9



SR-24 Line Locator

The SR-24 receiver can be used with a RIDGID-SeekTech transmitter to locate the position of buried utilities. When an electromagnetic signal field is present on a metallic conductor, the SR-24 shows a map of the signal's estimated position and direction. When interfering or conflicting signals are detected, the SR-24 informs the operator, reducing the likelihood of an inaccurate result. With integrated GPS and Bluetooth® technology, comprehensive locate data can be streamed to a smartphone or tablet and exported to GIS software.

- **Mapping display.** Real-time signal information including location, direction, depth and trustworthiness.
- **Multiple antenna system.** Dead spots, or nulls, are eliminated for greater speed and accuracy.
- **Built-in GPS.** Capture GPS coordinates for mapping and GIS software.
- **Third party GPS connection.** Integrated Bluetooth enables pairing with third party high resolution GPS units.
- **Data streaming.** Connect to Bluetooth™ enabled devices for comprehensive data logging.
- **Smartphone/Tablet RIDGIDtrax App.** Map and identify multiple tracks and waypoints and export trace data to GIS software. Recorded maps can be shared in KML (Google Earth) format through email.

Catalog No.	Description	Weight	
		lb.	kg
46393	SeekTech SR-24 Line Locator (Transport Case Included)	8,5	3,8



Made for:
 iPod iPhone iPad



RE 130-M

MANUAL HYDRAULIC CRIMP TOOL



Introducing the world's lightest
and easiest-to-use 130 kN Manual
Hydraulic Crimp Tool with C-Frame

RIDGID

Ridge Tool UK
c/o Emerson Electric UK Ltd, 2nd Floor Accurist House
44 Baker Street, London, W1U 7AL

T: +44 (0) 808 238 9869 UK
T: +353 1 800 936 397 Ireland
ridgid.gb@emerson.com

F: +44 (0) 808 238 9904 UK
F: +353 1 800 936 240 Ireland
www.RIDGID.com


EMERSON
Commercial & Residential Solutions